



CWSA Newsletter

Special Interest Articles:

- Art in the Park
- Social Art Groups
- CWSA News

Individual Highlights:

- Back page news

COVENTRY AND WARWICKSHIRE SOCIETY OF ARTISTS ART IN THE PARK SUCCESS FOR THE LSA.



Long-standing LSA member, Mo Finessey, who is the mind behind the event said: "The idea for Art in the Park came to me after seeing Art in Action, at Waterperry Gardens, in Oxford. It was so exciting to see so many artists doing live demonstrations of their work and I thought how wonderful it would be if LSA could hold an event like that in Jephson Gardens. There is such an active and vibrant, local arts community and it has always been my dream to organise an event where artists can promote their art or craft and engage directly with the public."



David Lewis at work



Below some pics of the BRINK Street Fusion event at the Bandstand!



Some highlights from the debut. The Saturday weather was it's usual, unpredictable self, but it didn't stop the exhibitors or public from enjoying the great artists, performers on offer! Sunday weather improved considerably and people flocked to see the art, crafts and performances. Several



artists were using their time to complete art work which hopefully inspired visitors to begin their own work. There was even a man crèche for bored non artists!

There were many craft works on show and for sale. There was even a performance of Macbeth! The music was especially good and I highly recommend Shanade Morrow. Performance art was well underway when we arrived on Sunday and several children were having their portrait painted whilst Birmingham sculptor, Graham Jones created excellent live, albeit noisy, wood carvings



Next year we want you to get involved as we are intending to have a CWSA marquee with 'time slots' available over the two days for members to bring in their own art works and crafts. This would mean we all get to exhibit but no one has to be there for any longer than a few hours. Do let us know if you are interested in this idea. More details available nearer the time. Many thanks to the many photographers and organisers for an excellent event. Click here to see more photos. https://www.facebook.com/pages/Art-in-the-Park-LSA/489395867826742?sk=photos_stream

SOCIAL ART GROUPS

MATTHEW PALMER WORKSHOP - SUMMER SCENES

Summer Scenes

This was a very well attended and much enjoyed water colour workshop. As before with the Winter Scene six months ago Matthew gave us his usual step by step approach, throwing in some interesting watercolour techniques to produce some very presentable bluebell



wood paintings. His approach is very

professional with overhead screens displaying images to help everyone get the most from the session. Non-members joined in too! We have booked him again for March next year when we hope he will tackle water with us.



LINDSEY ATTWOOD'S CALLIGRAPHY WORKSHOP

July Workshop

A really inspiring and informative session. Lindsey combined creative paintwork with freehand calligraphy which delighted us all. Several of us were so enthused that we signed up for her Calligraphy Course starting Weds. Sept. 17th 1.30-3.30pm at St Johns church hall, Kenilworth. If anyone else is interested there may be a few more places left, please contact Lindsey on 07767318646 email; lindseyattwood@btinternet.com.



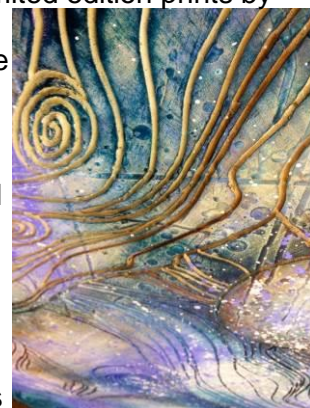
EN PLEIN AIR – AT KENILWORTH

Next Workshops

Plein air' at Castle Green Kenilworth, Thursday August 28th. 10.30am to 2.30 pm
Cost £5.00, which will include coffee served at the Clarendon pub at mid-day. We are very privileged to have the company of Gerald Green. Many of his paintings are painted 'plein air'. His work has been shown in numerous public and private galleries in the UK. (www.geraldgreen.co.uk). He will be doing his own painting in oils, but please bring your preferred medium. He will be there to give us a bit of guidance if necessary. Do come along and join us. If the weather is bad we will cancel. Just fill in the enclosed form or email to let me know if you can come. You can pay on the day. Julia.

SILK PAINTING with LESLIE WHELAN

A silk painting workshop with Leslie Whelan will take place at **Stoneleigh Village Hall on Saturday September 27th 1.00 pm to 4.00pm**. Lesley's work is sold in galleries throughout England, held in collections worldwide and sold as limited edition prints by John Lewis Partnership. 'Making sense of what I see is what drives my creative practice, and I am particularly interested in the connections that can be made to help this process. Much of my most recent work has focused in on the relationship between nature and mathematics, enabling me to look at familiar forms in different and unfamiliar ways, but historical, social and emotional factors also influence the way in which I approach my subjects. I'm not interested in a transitory moment in all my paintings my aim is to capture my feelings and sense of awareness.'



All materials will be provided. The cost will be £15.00 for members and £17.00 for non-members. **Closing date for forms will be September 3rd**. Forms enclosed. This is because she needs to know numbers three weeks beforehand, so she can order the materials she will need for the workshop. Check out her website on www.facebook.com/LesleywhelanARTIST

CWSA NEWS

Printing with
Colin Yates

GUM ARABIC TRANSFER PRINTING – New workshop possible

Colin Yates says; 'I'm a great advocate of this versatile printmaking process, which is quick and easy to learn, yet offers a wide range of possibilities to the beginner and seasoned printmaker alike. Few rules and much to explore! The process uses the black and white photocopy as the printing plate (matrix), which enables participants to create prints from original drawings, photographs or digital imagery. I'm hopefully going to take another workshop later in the year, (yet to be confirmed)". **Colin will be giving a demonstration to the Rugby Arts Society at their AGM in September at Dunchurch Village Hall, Dunchurch Road CV22 6PN. For more information info@rugbyanddistrictartsociety.org.uk**

Any interested parties please contact Colin at the email address below and he will keep you in the loop! Email: Colin66@btinternet.com www.footballfineart.com

EXCITING NEW HOLIDAYS AND COURSES

You may be interested in the following links click below to see!

Painting holidays: <http://www.creativecoverage.co.uk/artist-news/holidays>

Courses: <http://www.creativecoverage.co.uk/artist-news/courses>

Tim Saunders www.creativecoverage.co.uk

ART AT THE LOFT

Janet Cheary sold four pieces at the last Loft exhibition! Well done Janet.

The next main house production will be starting on 8th October, Relatively Speaking by Alan Ayckbourn followed by Scrooge in December. We are hoping to have the opportunity to stage a print/photography exhibition at the Loft for members work during October. Jacqui will send details and submission forms out shortly. Tina Watkins and Edith Whatling are hoping to exhibit either over the Christmas period or in the New Year and Winifred Wilmot has shown an interest in the space so you will need to make plans for the New Year if you wish to exhibit. Please contact Jacqui on jacqui.a.smithson@gmail.com

GALLERY 150 - MOVING and SUMMER SHOW

Gallery 150 is excited to announce that we are moving!! Don't worry we are only moving across the street into the unit which was Venture Photography. This is a very exciting opportunity for everyone involved. We will be looking for volunteers closer to the date and will need a lot of support to make this a success. If you are interested in volunteering please email info@gallery150.co.uk. We will need volunteers from August 11- 1st September.

The Summer Show has over 140 pieces of artwork on display including two by our own Jane Powell. Please come and celebrate a wonderful show, and the brilliant gallery space that we have called 'home' for many years. The winner for the Peoples Choice Awards for DRIVEN! will also be announced. Party starts August 12th @ 7pm.

MA in PAINTING OPPORTUNITY at COVENTRY UNIVERSITY

The perceived shift in attitudes to art production over recent years, caused partly by the ubiquitous nature of technology, has meant there is a renewed interest in painting and how it might flourish in a digital age. This new course proposes a more 'disciplinary' approach to study, where painting as a distinct language and discipline can be studied in depth. Successful graduates may find careers as self-employed artists exhibiting in a wide range of galleries. You may also use this qualification to help enhance prospects of entering a career in education. Full course details can be found by visiting: <http://www.coventry.ac.uk/course-structure/2014/school-of-art-and-design/postgraduate/painting-ma/>

LEONIE PERRY

You will have heard the very sad news that Leonie passed away recently. She will be very much missed as a very unique and inspirational lady who many of us have been privileged to have known. Leonie was Chair of the CWSA from 1989 for a year or so and had been a fine pastel artist, teacher and was highly thought by so many. The funeral was held at Oakley Woods Crematorium on 30th June and many of the committee attended. A donation was made by the Society on your behalf to The Stroke Association.

BACK PAGE NEWS

INVITATION

Alexandra Duckett is a teacher at an infant school in Bedworth is looking for a local artist who would be available to work in the school during October possibly on self-portraits. The school has recently had a lot of redundancies meaning we have spare classrooms which are crying out for beautiful art projects. Alexandra would be grateful for any information about anything you may be able to offer. alexbeth18@hotmail.com

Events Diary

August – Painting in Plein Air at Castle Green Kenilworth, Thursday August 28th - 10.30am to 2.30 pm.

Cost £5.00 – pay on the day, which will include coffee served at the Clarendon

September - Silk painting with Leslie Whelan on Saturday September 27th, from 1.00pm – 4.00pm at Stoneleigh Village Hall.

October – Pastels with Pauline Wilson on Tuesday 14th October from 11.00am – 3.00pm at Stoneleigh Village Hall

November – Painting without a Brush with Fiona Payne on Tuesday 25th

November from 10.15am – 12.45pm at Stoneleigh Village Hall

December – Christmas Lunch on Saturday 6th December at Kings Hill Nurseries again. Lunch 12.30 – 4.00pm.

January – Fish and Chip event on 31st January 2015. Venue yet to be decided.

March – Matthew Palmer Workshop. 5th March at Stoneleigh Village Hall. Details nearer the date.

ANOTHER INVITATION

OPEN STUDIO ~ Friday 8th, Saturday 9th August, Monday 11th August, Tuesday 12th August. 11am - 5pm. COOKIES, CAKE, COFFEE, TEA AND CHAT

At The Old Granary, Castle Close, Fillongley CV7 8PB

If you can't make any of these days - and would like to come and see my work, please let me know. Once the exhibition is set up - it usually stays in place for a while afterwards. We enjoy 'Open Studio' as it is a wonderful opportunity to get together with friends and neighbours - and make new friends. If the weather is good, not windy or wet - some paintings will be on display in the garden.

FILLONGLEY ART GROUP - CLASSES

Resume end of September. Watercolour - Tuesday afternoon 2 - 4pm.

*New group - if there is enough interest - Drawing, Pastel, Watercolour or Oil painting. Tuesday evening 7pm - 9pm. Small groups, usually a maximum of 8 students. Please let me know if you wish to reserve a place. **Susan Moore. Tel 01676 541866**

Tel mobile 07745 144 922. Email: susan.k.moore@btinternet.com

CWSA COMMITTEE 2014

| | | PHONE: | E-MAIL: |
|-----------------------|--|--------------|--|
| President | Jane Powell | 01676 532418 | jane@janepowell-artist.co.uk |
| Vice Presidents | Nancy Upshall, Edna Elwell, Morris Buer, Sheila Fitzgerald | | |
| Chair | Edith Whatling | 07946 788216 | edith_gio@yahoo.co.uk |
| Vice Chair | Jane Powell | | |
| Exhibitions Assistant | Anna Pointer | | |
| Secretary | Sheila Karran | 02476 674877 | sheila.karran@gmail.com |
| Treasurer | Gill Buick | 01926 419743 | gillbuick@gmail.com |
| Membership Secretary | Maureen Townsend | 01926 428273 | daveat6@tiscali.co.uk |
| Exhibitions | Jacqui Smithson | 01926 851764 | jacqui.a.smithson@gmail.com |
| Newsletter/Web editor | Tina Watkins | 01926 777169 | tina.watkins@ntlworld.com |
| Events | Julia Yarrow | 02476 418562 | jyarrow@talktalk.net |