



Special Interest Articles:

- Exhibitions
- Social Art
Groups
- CWSA News

Individual Highlights:

- Back page news

COVENTRY AND WARWICKSHIRE SOCIETY OF ARTISTS

GALLERY 150 TO CLOSE

As you may have heard, Gallery 150 will be closing on February 27th. Apparently they were only given notice a few days ago. They are looking for a premises, but currently do not have anything ready or suitable. They have had 4 years in Livery Street and in that time have put on scores of unique exhibitions and several for the CWSA, helping create a buzz in the area. Now it's all changed and they need to find suitable new premises. If you think you can help please contact Kate at manager@gallery150.co.uk.

Obviously this was a shock to everyone and as all bookings have been suspended and our Annual Exhibition is now in jeopardy. Nancy Upshall also had an exhibition booked for May so we all hope that a new venue can be found quickly. We will keep you all informed as and when we have further information.

THE GALLERY ART AND WINE EXHIBITION

Our exhibition at the Gallery Art and Wine bar has been very successful with 5 sales of paintings. However it is due to end this month and artists are asked to collect their unsold work on **Wednesday 25th February** from **2pm until 4pm** to make way for another exhibition. I will be at the venue to check paintings out and to hopefully help this run smoothly. ****THIS IS YET TO BE POSITIVELY CONFIRMED****

The new show will only be on for 10 days and after this The Gallery would like us to bring new pieces for hanging. It may be possible for us to swap members artworks from this exhibition into the Kenilworth Centre exhibition and vice versa. The committee are having an extraordinary meeting on February 11th to discuss these matters and will let you know as soon as any decisions are finalised. Tina.

THE KENILWORTH CENTRE EXHIBITION OPENING

As you know Anna has arranged for an official opening of the exhibition by the Mayor on **Monday 9th February**. This should be a wonderful opportunity to get this exhibition re-started as there will be press coverage and 'nibbles' for all so do come along to support your Society at **2.30 pm**.

We hope to keep the exhibition going a little longer than planned, we had originally said we would change artworks at the end of February. We would like new work to go into The Gallery Art and Wine during March so it may be possible to swap paintings over as already mentioned – we will keep you informed.

ART EXHIBITION AT THE LOFT

Edith and Tina have taken the space at the loft during January and February hopefully to then be followed by Margaret Cole and Bill Squires with a joint show and then Lionel Bull. Tina sold a picture during January – her portrait of Jack Nicholson. Many thanks to Jacqui for all her hard work getting the picture to the buyer, it hasn't been easy to do unfortunately! That should take us nicely up to the summer. All dates for hanging to be confirmed. Do let Jacqui know if you would like to be hung! Go to the link below to see what's on and how it all works.

<http://www.loft-theatre.co.uk/introduction/exhibit.php>

SOCIAL ART GROUPS

Fish n Chips!

ANNUAL FISH and CHIP LUNCH



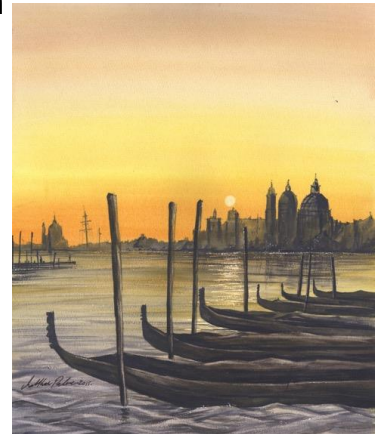
Last weekend our Fish and Chip lunch was held, surrounded by our paintings, at a new venue 'The Kenilworth Centre'. Our local fish and chip shop provided an excellent meal and tea was served afterwards. Thank you to all involved in setting up and brewing a much needed cuppa. This was followed by a review of our paintings and excellent advice was given by Nancy, Jane and Susan Moore. Thanks again to all involved it was a very interesting afternoon and lovely to see new and old members!

MARCH – WORKSHOP WITH MATTHEW PALMER

First Workshop



These are the two paintings Matthew has offered to paint with us, Venice or Derwent Water. We would like to ask members beforehand which one they would prefer to paint. We



will then count the votes and go with the majority! The workshop will be held on **March 3rd 10.30am to 1.30 pm at Stoneleigh Village Hall**. The charge for the workshop will be £15 for members or £17 for non-members. Forms are enclosed with this newsletter and will be available on the website shortly.

Workshops to come

AGM and SUMMER EVENTS

Our **AGM** will be held on **April 11th at Leek Wootton Village Hall from 2.30pm until 4.30pm**. The usual splendid afternoon tea will be provided by Gill and you will be receiving all the voting information closer to the date.

Saturday May 9th brings us to our next workshop, which is at **Stoneleigh Village hall from 2.15 pm until 5pm** and features **Leslie Whelan** giving a **Silk Painting session**. Something many of us will look forward to. Those of you who will be taking this workshop will need to send in your entries three weeks before as Leslie will supply all equipment needed but must know numbers to buy materials for us all. Please put **18th April** in your diary as a date to respond by or you will not be able to take part. This event is **limited to 12 people** so please book quickly.

During June there may be a workshop by **Tom Shepherd** featuring oil or acrylics. This may be a chance for those of us who love working in oils to have an opportunity for some feedback and instruction. Many of us do not work in this medium and although, I personally find it quite difficult, it is challenging and exciting way of delivering an exceptional piece of artwork.

Later in July we are planning an acrylics workshop which will really challenge our views against the other workshops! Also an en plein air session is on the cards for a summer outing for members. Watch this space!

CWSA NEWS

KENILWORTH CENTRE EXHIBITION OPENING

The Mayor of Kenilworth will open our exhibition at the **Kenilworth Centre on Monday 9th February at 2.30 pm**. Please do attend if you can make it to support our efforts to show your work. After the opening there will be an article in the press which should boost our sales and public awareness.

*Mayor to
open our
Exhibition*

LIFE AND CHANGE EXPERIENCED THRU SPORTS - ART EXHIBITION

We are delighted to invite you to an exclusive evening preview of the Life and Change Experienced thru Sports Art Exhibition at **The Gallery Art & Wine on Friday, February 27, 2015 7:00pm**. Internationally acclaimed Artist Nadira Azzouz will be showing her work in support of L.A.C.E.S. this is a special exhibition sale and we would like you to join us for the opening night and drinks reception of this 10 day show.

Guest artist, Jacqui Smithson will also be joining Nadira in showing her work. Jacqui is a mixed media Artist based in Kenilworth, working predominantly with textiles she also paints large scale acrylics. Proceeds from all sales will support our ongoing work in Liberia helping children overcome the aftershock of the civil war and protecting them from Ebola.

Be a part of the Change. The Gallery Art & Wine 7 Smalley Place Kenilworth Warwickshire CV8 1QG RSVP Andy Ransberry - andy.ransberry@laces.org or 07930675671

WARWICKSHIRE OPEN STUDIOS

SIGNING UP FOR THE 2015 SUMMER EVENT

We will be accepting **entries through the website from Sunday 1st until Saturday 28th February**. Remember there are no limits on the number of entries and no selection process so you can take your time to prepare. You can find some hints and tips on the For Artists page including making the most of your webpage and brochure entry.

MEETING UP AND GETTING READY.

We are holding meet ups across the county where you can chat with other artists, share ideas and get advice on what you can do to make your event a success. Click on the location that is best for you and book a FREE ticket now.

Coventry: **Monday 16th February 2015 from 7 pm**
Leamington Spa: **Tuesday 17th February 2015 from 7 pm**
Stratford upon Avon: **Tuesday 17th February from 7:30 pm**
Rugby: **Wednesday 18th February 2015 from 6:30 pm**

This is a great opportunity to work with your neighbouring artists to make your events more attractive to visitors. We hope that you can join us at one of these events.

NEW EXHIBITION AT THE HERBERT ART GALLERY

A brand new exhibition: **Recording Britain**, will be on display from Friday 30th January to Sunday 26th April. At the outbreak of the Second World War, an ambitious scheme was set up to employ artists to draw and paint, places and buildings, creating a lasting record of British lives at a time of imminent change. The result was a collection of more than 1500 watercolours and drawings created by many artists, establishing a remarkable, yet highly selective, snapshot of a fast changing country.

This "Recording Britain" collection, is normally held at the Victoria and Albert Museum and includes works by prolific artists such as John Piper and Kenneth Rowntree along with a host of lesser-known contributors. We are delighted to be able to present this remarkable collection here in Coventry, for West Midlands audiences to enjoy.

This exhibition is free to enter and is an ideal way to start your new year, with a visit to this beautiful and nostalgic collection of watercolours that is almost on your doorstep. Further information can be found on our website at: <http://www.theherbert.org/whats-on/events-exhibitions>

BACK PAGE NEWS

MOVING ON

As many of you know Phil and I are moving away from Warwickshire to leafy Worcestershire shortly. We will be sad to leave as we love Kenilworth so much but are looking forward to our new home and taking walls apart yet again! I have very much enjoyed editing your newsletter but will not be able to continue when we move. I will still be on the committee until we leave and am happy to update the website afterwards but we will need a new newsletter editor – I am happy to show anyone who has Word skills how I do it if you wish. Anyone interested please contact me on 01926 777169 or tina.watkins47@outlook.com.

Events Diary

March – Matthew Palmer Workshop.
Tuesday 3rd March at Stoneleigh Village Hall. Details included.

AGM, on April 11th at Leek Wootton Village Hall from 2.30pm until 4.30pm.
 Info to follow.

May – Leslie Whelan Silk Painting – Saturday 9th May, 1.00pm – 4pm at Stoneleigh Village Hall. Details included

June -Tom Shepherd, oil or acrylics.
 Info to follow.

July – Jan Gay Acrylics. Info to follow

COVENTRY ARTS CONSORTIUM at THE HERBERT

The provisional dates for this year's exhibition at the Herbert in Coventry: **17th October - 1st November 2015.** Submission forms to be in by: **Friday 25th September.**

Handing in day: Saturday 10th October. As I receive more information - I will keep you up-dated. Plenty of time to paint some 'large' pictures as there is no limitation on size.

Work selected for this exhibition is decided by one member of each society who make up the 'selection panel.' All work must be 'original' not prints, well mounted/framed, and not previously exhibited at the Herbert. Paintings on canvas - sides of the canvas should be painted if un-framed.

***The exhibition is only open to members of the four Coventry Art Societies. CWSA. Art Guild. Triumph and Coventry Watercolour.**

I hope to retire as 'Chairman' for the 2017 exhibition to give someone else an opportunity to take this exhibition forward with 'new ideas.' Volunteer/s required. If you have any ideas or comments on how we can improve this exhibition - please let me know.

Susan Moore *Chairman, Coventry Arts Consortium* *Tel 01676 541866*

Web: (Art) <http://www.susan-moore.co.uk/>

CWSA COMMITTEE 2014

		PHONE:	E-MAIL:
President	Jane Powell	01676 532418	jane@janepowell-artist.co.uk
Vice Presidents	Nancy Upshall, Edna Elwell, Morris Buer, Sheila Fitzgerald		
Chair	Edith Whatling	07946 788216	edith_gio@yahoo.co.uk
Exhibitions Assistant	Anna Pointer		annap2012@talktalk.net
Secretary	Sheila Karran	02476 674877	sheila.karran@gmail.com
Treasurer	Gill Buick	01926 419743	gillbuick@gmail.com
Membership Secretary	Maureen Townsend	01926 428273	daveat6@tiscali.co.uk
Exhibitions	Jacqui Smithson	01926 851764	jacqui.a.smithson@gmail.com
Newsletter Editor	Vacant		
Web Editor	Tina Watkins	01926 777169	tina.watkins47@outlook.com
Events	Julia Yarrow	02476 418562	jyarrow@talktalk.net